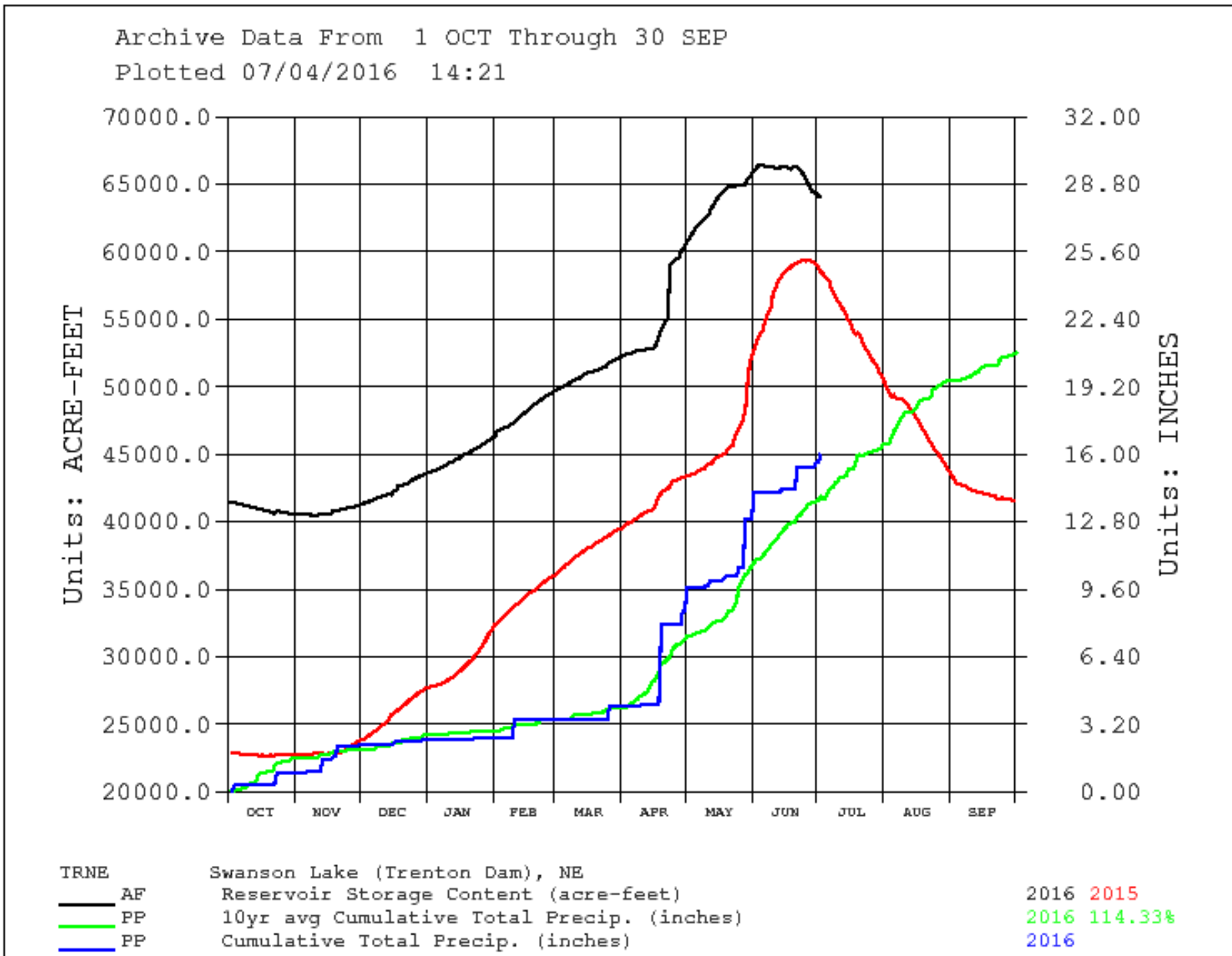
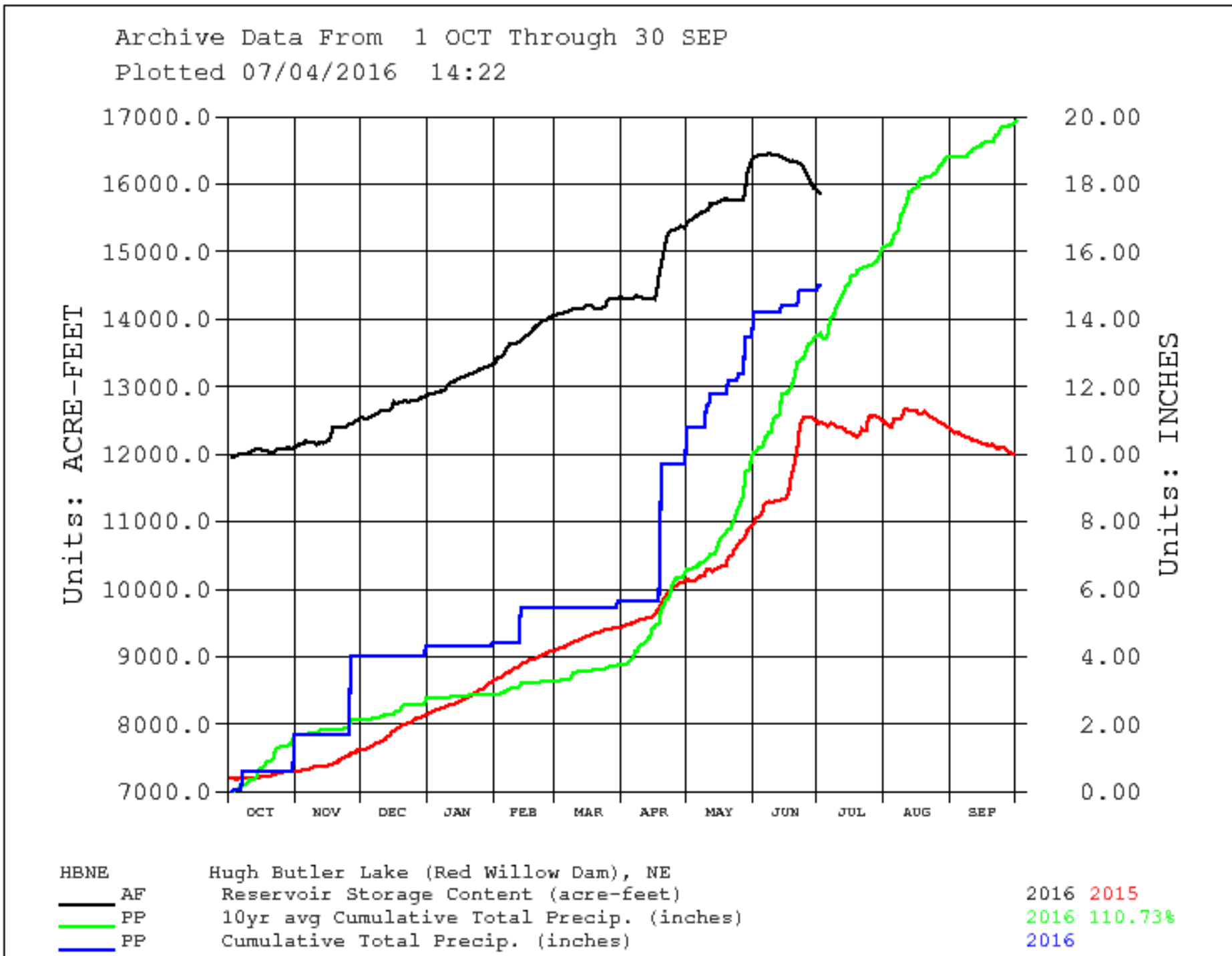


Frenchman Cambridge 2016 Storage Water Supply

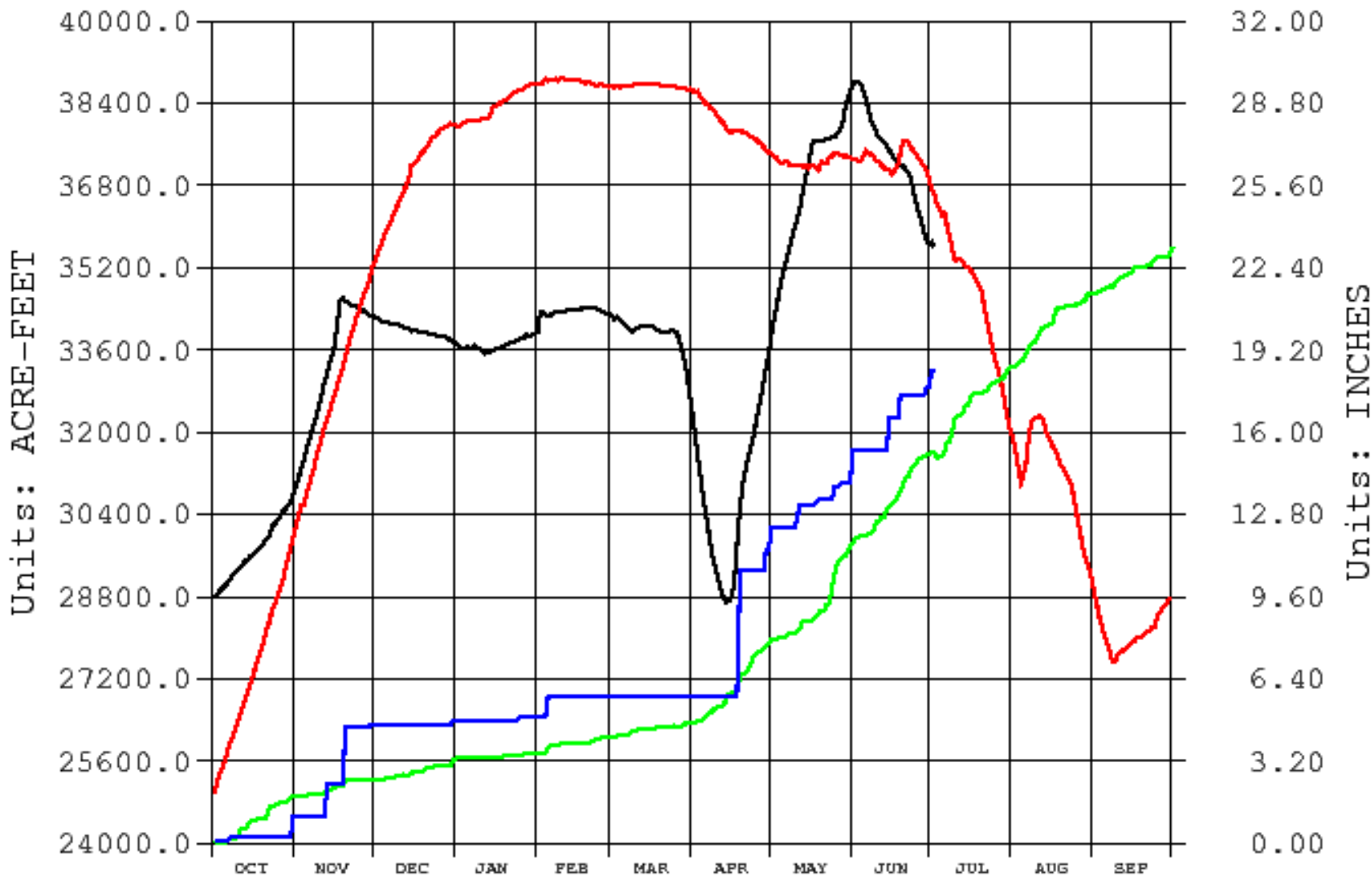
Reservoir Content / Irrigation Supply

Reservoirs 2016	Swanson		Hugh Butler		Harry Strunk		Total AF
	Elevation	Acre-Feet	Elevation	Acre-Feet	Elevation	Acre-Feet	AF
Top of Irrigation Pool	2752.00	110,175	2581.80	36,224	2366.10	34,647	181,046
* FCID Contracted Shut Off Elevation/Content AF	2725.00	18,958	2561.00	11,212	2343.00	7,897	38,067
<i>FCID Contracted Irrigation Pool Capacity at 100% Full</i>	27.00	91,217	20.80	25,012	23.10	26,750	142,979
Elevation / Content in AF	2741.06	64,035	2566.18	15,861	2366.62	35,614	115,510
% of Full Capacity	58.1%		43.8%		102.8%		63.8%
Current 2016 Irrigation Supply	Feet	A.F.	Feet	A.F.	Feet	A.F.	A.F.
	16.06	45,077	5.18	4,649	23.62	27,717	77,443
Friday, July 01, 2016	% Irr. Pool	49.4%	% Irr. Pool	18.6%	% Irr. Pool	103.6%	54.2%





Archive Data From 1 OCT Through 30 SEP
 Plotted 07/04/2016 14:17



HSNE	Harry Strunk Lake (Medicine Creek), NE	
— AF	Reservoir Storage Content (acre-feet)	2016 2015
— PP	10yr avg Cumulative Total Precip. (inches)	2016 120.75%
— PP	Cumulative Total Precip. (inches)	2016

Reservoirs 2016	Harlan Co.	
	Elevation	Acre-Feet
Top of Irrigation Pool	1945.73	314,111
Contracted Shut Off Elevation/Content AF	1930.84	149,060
<i>Contracted Irrigation Pool Capacity at 100% Full</i>	14.89	165,051
Elevation / Content in AF	1939.54	237,234
% of Full Capacity	75.5%	
Current 2016 Irrigation Supply	Feet	A.F.
	8.70	88,174
Friday, July 01, 2016	% Irr. Pool	53.4%

